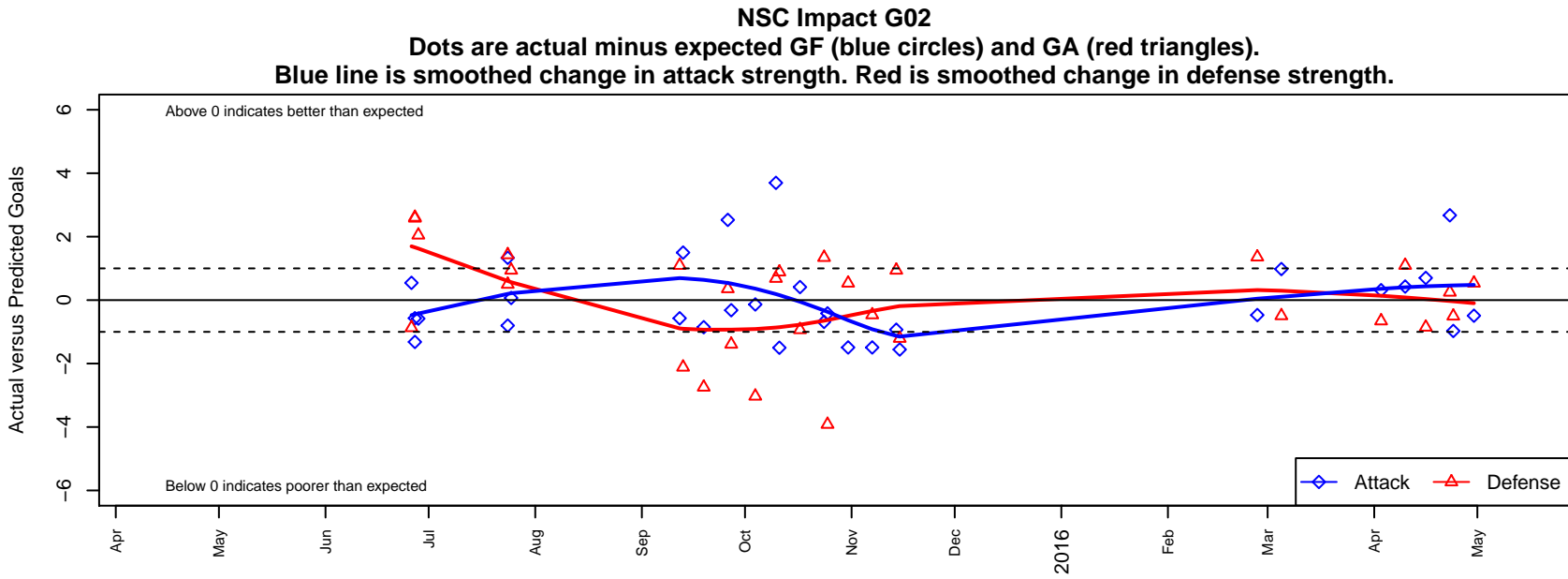


# NSC Impact G02

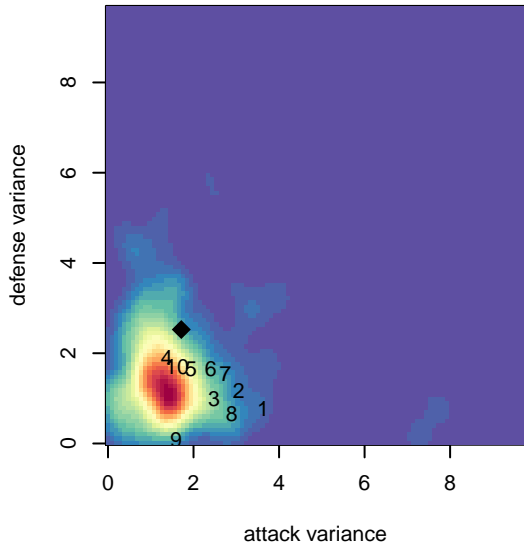
, OR  
 G02 total strength=829  
 attack=1.42 defense=0.86  
 fall league = PTT G02 Div 1 Red  
 spr league = Spr OYS G02 Div 1 White

alt names used:  
 NSC IMPACT (USA)  
 NSC Impact GU13  
 NSC U13G Impact  
 NSC Impact GU13  
 NSC U13G Impact  
 NSC U13G Impact  
 NSC U13G Impact

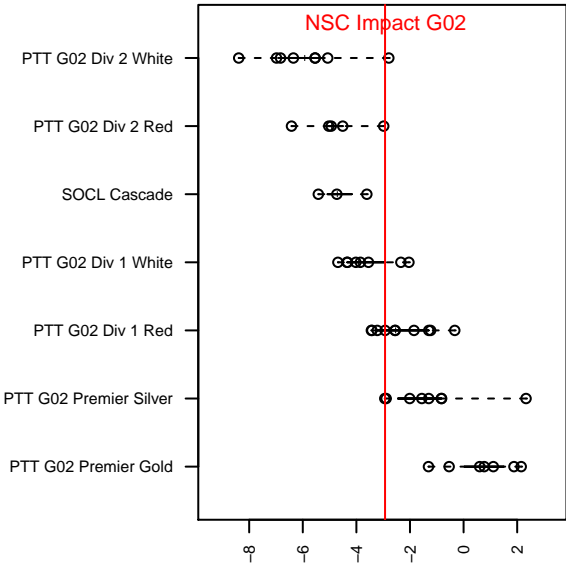
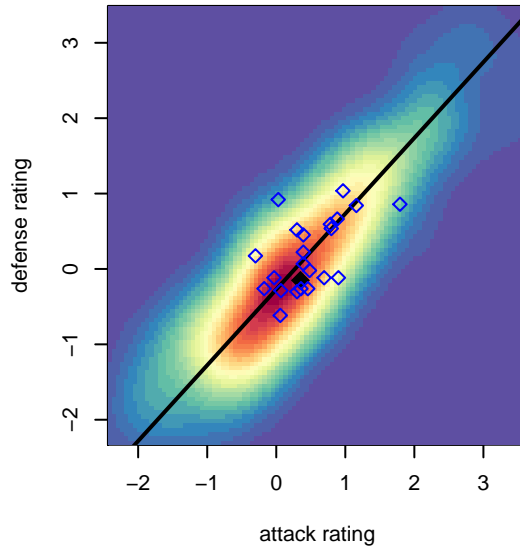
Venues played:  
 2015 Clash At the Border Gold/Silver U13  
 2015 Oswego Nike Cup Silver U13  
 2015 PTT G02 Division 1 Red  
 2015 OYS Presidents Cup G02  
 2015 Spr OYS G02 Division 1 White



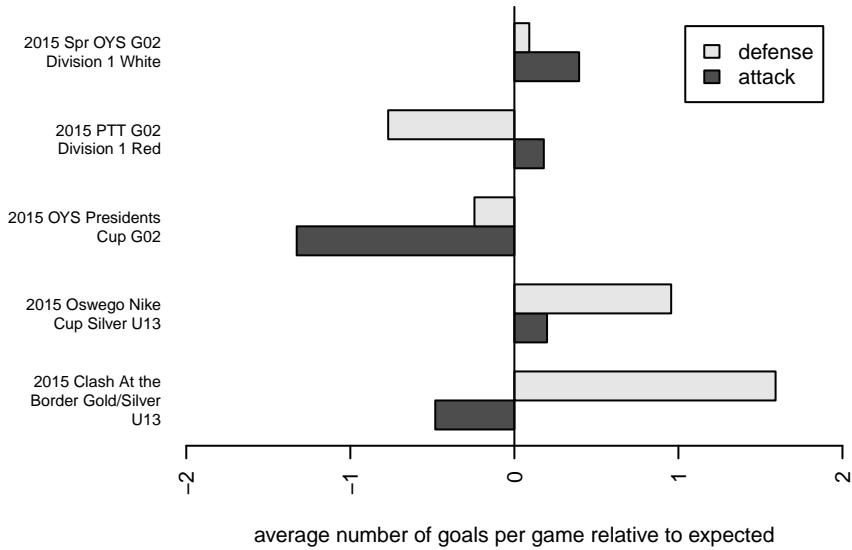
**attack and defense variance (black dot)  
relative to other teams  
and top 10 in region**



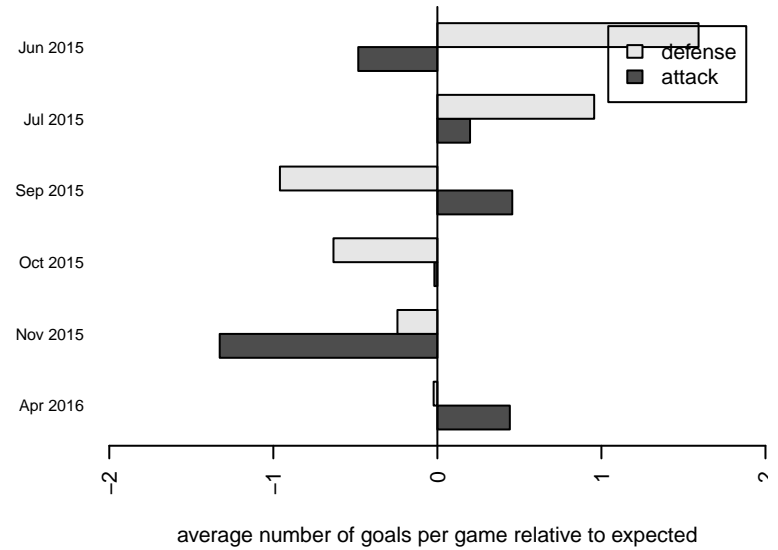
**attack and defense rating  
relative to others at age  
and all opponents in last 13 months**



**Performance relative to 13 month average**



**Performance relative to 13 month average**



| date       | home                          |   | away                                |   | venue                                    | pred.home | pred.away |
|------------|-------------------------------|---|-------------------------------------|---|--|-----------|-----------|
| 2016-04-30 | Capital FC Timbers Black G02  | 1 | NSC Impact G02                      | 1 | 2015 Spr OYS G02 Division 1 White        | 1.53      | 1.49      |
| 2016-04-24 | FC Portland White G02         | 2 | NSC Impact G02                      | 0 | 2015 Spr OYS G02 Division 1 White        | 1.50      | 0.97      |
| 2016-04-23 | NSC Impact G02                | 4 | PCU SESC Revolution G02             | 2 | 2015 Spr OYS G02 Division 1 White        | 1.33      | 2.25      |
| 2016-04-16 | NSC Impact G02                | 3 | Crossfire OR WUSC Atletico Navy G02 | 2 | 2015 Spr OYS G02 Division 1 White        | 2.30      | 1.15      |
| 2016-04-10 | NSC Impact G02                | 1 | THUSC Sapphire G02                  | 0 | 2015 Spr OYS G02 Division 1 White        | 0.57      | 1.09      |
| 2016-04-03 | HSC Thunder G02               | 2 | NSC Impact G02                      | 2 | 2015 Spr OYS G02 Division 1 White        | 1.34      | 1.69      |
| 2016-03-05 | Washington Timbers Forest G02 | 2 | NSC Impact G02                      | 2 | 2015 Spr OYS G02 Division 1 White        | 1.51      | 1.02      |
| 2016-02-27 | PCU Red G02                   | 0 | NSC Impact G02                      | 1 | 2015 Spr OYS G02 Division 1 White        | 1.36      | 1.47      |
| 2015-11-15 | Crossfire OR CUSC Red G02     | 2 | NSC Impact G02                      | 0 | 2015 OYS Presidents Cup G02              | 0.79      | 1.56      |
| 2015-11-14 | NSC Impact G02                | 1 | Bend FC Timbers White G02           | 0 | 2015 OYS Presidents Cup G02              | 1.93      | 0.94      |
| 2015-11-07 | NSC Impact G02                | 0 | Capital FC Timbers Black G02        | 2 | 2015 OYS Presidents Cup G02              | 1.49      | 1.53      |
| 2015-10-31 | NSC Impact G02                | 0 | Capital FC Timbers Black G02        | 1 | 2015 PTT G02 Division 1 Red              | 1.49      | 1.53      |
| 2015-10-25 | NSC Impact G02                | 0 | FC Portland Navy G02                | 7 | 2015 PTT G02 Division 1 Red              | 0.42      | 3.08      |
| 2015-10-24 | HSC Thunder G02               | 0 | NSC Impact G02                      | 1 | 2015 PTT G02 Division 1 Red              | 1.34      | 1.69      |
| 2015-10-17 | Westside Timbers Samba TS G02 | 3 | NSC Impact G02                      | 1 | 2015 PTT G02 Division 1 Red              | 2.07      | 0.59      |
| 2015-10-11 | NSC Impact G02                | 0 | CYSA Timber Barons Green G02        | 1 | 2015 PTT G02 Division 1 Red              | 1.50      | 1.89      |
| 2015-10-10 | NSC Impact G02                | 5 | WAFC Storm G02                      | 1 | 2015 PTT G02 Division 1 Red              | 1.30      | 1.68      |
| 2015-10-04 | ETFC Force Red G02            | 4 | NSC Impact G02                      | 1 | 2015 PTT G02 Division 1 Red              | 0.97      | 1.14      |
| 2015-09-27 | NSC Impact G02                | 1 | Pacific FC United G02               | 4 | 2015 PTT G02 Division 1 Red              | 1.32      | 2.61      |
| 2015-09-26 | PCU Red G02                   | 1 | NSC Impact G02                      | 4 | 2015 PTT G02 Division 1 Red              | 1.36      | 1.47      |
| 2015-09-19 | NSC Impact G02                | 0 | Kidsports McKenzie Strykers FC G02  | 5 | 2015 PTT G02 Division 1 Red              | 0.85      | 2.25      |
| 2015-09-13 | CYSA Timber Barons Green G02  | 4 | NSC Impact G02                      | 3 | 2015 PTT G02 Division 1 Red              | 1.89      | 1.50      |
| 2015-09-12 | THUSC Sapphire G02            | 0 | NSC Impact G02                      | 0 | 2015 PTT G02 Division 1 Red              | 1.09      | 0.57      |
| 2015-07-25 | NSC Impact G02                | 2 | Bend FC Timbers White G02           | 0 | 2015 Oswego Nike Cup Silver U13          | 1.93      | 0.94      |
| 2015-07-24 | Harbor Premier Green G02      | 1 | NSC Impact G02                      | 2 | 2015 Oswego Nike Cup Silver U13          | 2.43      | 0.67      |
| 2015-07-24 | Crossfire OR LOSC Impact G02  | 1 | NSC Impact G02                      | 0 | 2015 Oswego Nike Cup Silver U13          | 1.50      | 0.80      |
| 2015-06-28 | Crossfire Select Reibold G02  | 1 | NSC Impact G02                      | 0 | 2015 Clash At the Border Gold/Silver U13 | 3.05      | 0.58      |
| 2015-06-27 | Eastside Timbers Red G02      | 4 | NSC Impact G02                      | 0 | 2015 Clash At the Border Gold/Silver U13 | 6.58      | 0.57      |

| <b>date</b> | <b>home</b>           |   | <b>away</b>    |   | <b>venue</b>                             | <b>pred.home</b> | <b>pred.away</b> |
|-------------|-----------------------|---|----------------|---|--|------------------|------------------|
| 2015-06-27  | Pacific FC United G02 | 0 | NSC Impact G02 | 0 | 2015 Clash At the Border Gold/Silver U13 | 2.61             | 1.32             |
| 2015-06-26  | NSC Impact G02        | 2 | Dragons FC G02 | 3 | 2015 Clash At the Border Gold/Silver U13 | 1.46             | 2.13             |